

GENERAL NOTES:

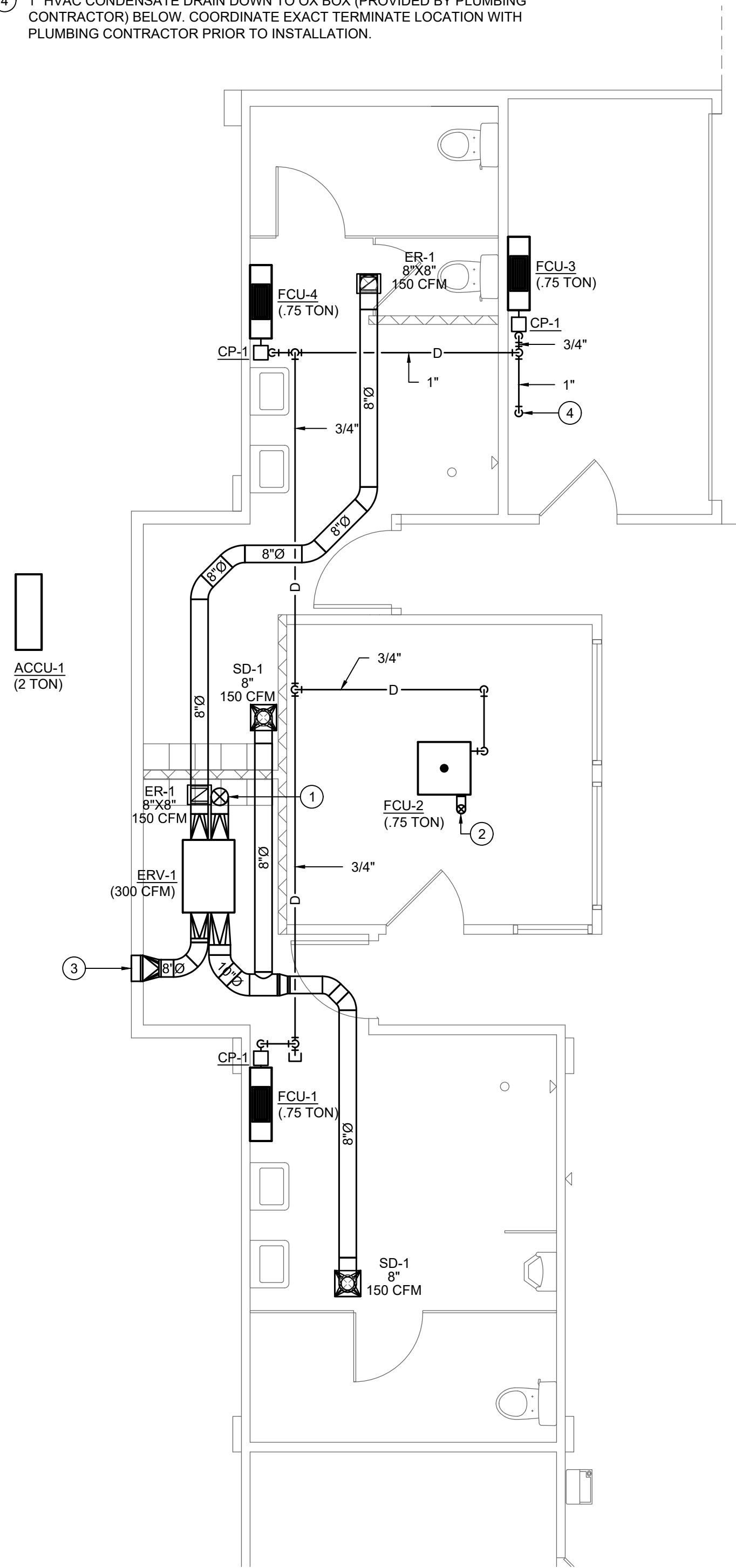
- PRIOR TO SUBMITTING BID, VISIT THE JOB SITE AND BECOME FULLY ACQUAINTED WITH THE EXISTING CONDITIONS OF THE PROJECT. REVIEW GENERAL NOTES, SPECIFICATIONS AND OTHER DISCIPLINE'S DRAWINGS FOR ADDITIONAL REQUIREMENTS THAT MAY NOT BE SPECIFICALLY CALLED OUT IN THIS PORTION OF THE CONSTRUCTION DOCUMENTS. NOTIFY ARCHITECT, TENANT AND ENGINEER OF ANY DISCREPANCIES PRIOR TO SUBMISSION OF BID.
- EXISTING CONDITIONS WERE TAKEN FROM AS BUILT DRAWINGS AND SITE VISITS AND MAY NOT REFLECT EXACT "AS-BUILT" CONDITIONS. COORDINATE DEMOLITION WORK AND NEW WORK WITH EXISTING CONDITIONS AND OTHER TRADES PRIOR TO CONSTRUCTION.
- REFER TO ARCHITECTURAL DRAWINGS FOR RELATED CONSTRUCTION DETAILS AS APPLICABLE TO THE PLUMBING SYSTEMS. VERIFY CHASE AND PENETRATION LOCATIONS SHOWN ON THE ARCHITECTURAL DRAWINGS THAT ARE INTENDED FOR PIPING MEET REQUIREMENTS.
- INSTALL PIPING PARALLEL TO BUILDING LINES, UNLESS NOTED OTHERWISE.
- COORDINATE LOCATION OF EQUIPMENT AND SUPPORTS WITH LOCATION OF ACCESS PANELS/DOORS TO ENABLE SERVICE OF EQUIPMENT. IF NO ACCESS PANEL IS SHOWN, PROVIDE ACCESS PANEL IN SIZE REQUIRED FOR MAINTENANCE OF EQUIPMENT. COORDINATE EXACT LOCATION WITH ARCHITECT PRIOR TO INSTALLATION.
- SEAL PENETRATIONS THROUGH BUILDING COMPONENTS IN ACCORDANCE WITH LOCAL CODES. FIREPROOF PENETRATIONS THROUGH FIRE RATED COMPONENTS IN ACCORDANCE WITH U.L. REQUIREMENTS.

PLAN NOTES:

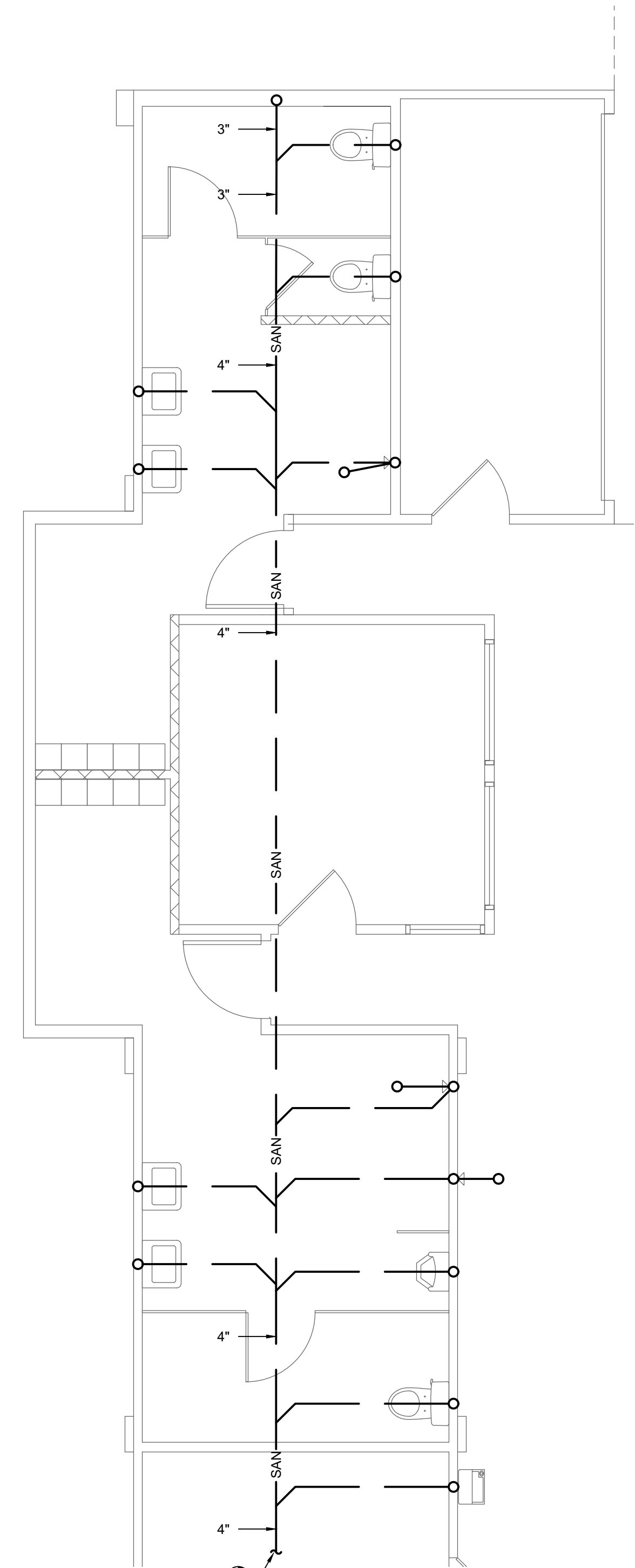
- 8"Ø OUTSIDE AIR DUCT UP THROUGH ROOF ABOVE. TERMINATE WITH 12"x12" GREENHECK FABRAHOOD IN COLOR SELECTED BY ARCHITECT. PROVIDE WITH GRAVITY INTAKE DAMPER & INSECT SCREEN.
- 4"Ø OUTSIDE AIR DUCT UP THROUGH ROOF ABOVE. TERMINATE WITH 12"x12" GREENHECK FABRAHOOD IN COLOR SELECTED BY ARCHITECT. PROVIDE WITH GRAVITY INTAKE DAMPER & INSECT SCREEN.
- 8"Ø EXHAUST AIR DUCT TO 12"x12" GREENHECK ELF375D EXHAUST LOUVER. PROVIDE IN COLOR SELECTED BY ARCHITECT. COORDINATE EXACT MOUNTING LOCATION WITH ARCHITECT PRIOR TO INSTALLATION. PROVIDE WITH INSECT SCREEN AND GRAVITY RELIEF DAMPER.
- 1" HVAC CONDENSATE DRAIN DOWN TO OX BOX (PROVIDED BY PLUMBING CONTRACTOR) BELOW. COORDINATE EXACT TERMINATE LOCATION WITH PLUMBING CONTRACTOR PRIOR TO INSTALLATION.

PLUMBING FIXTURE CONN. SCHEDULE						
FIXTURE	MARK	CW	HW	WASTE	VENT	
LAVATORY	L-1	1/2"	1/2"	2"	1-1/2"	
URINAL	U-1	3/4"	--	3"	2"	
FLUSH TANK WATER CLOSET	WC-1	1/2"	--	3"	2"	
ELECTRIC WATER COOLER	EWC-1	1/2"	--	2"	1-1/2"	
FLOOR DRAIN	FD-1	--	--	2"	1-1/2"	
SHOWER	SH-1	1/2"	1/2"	--	--	

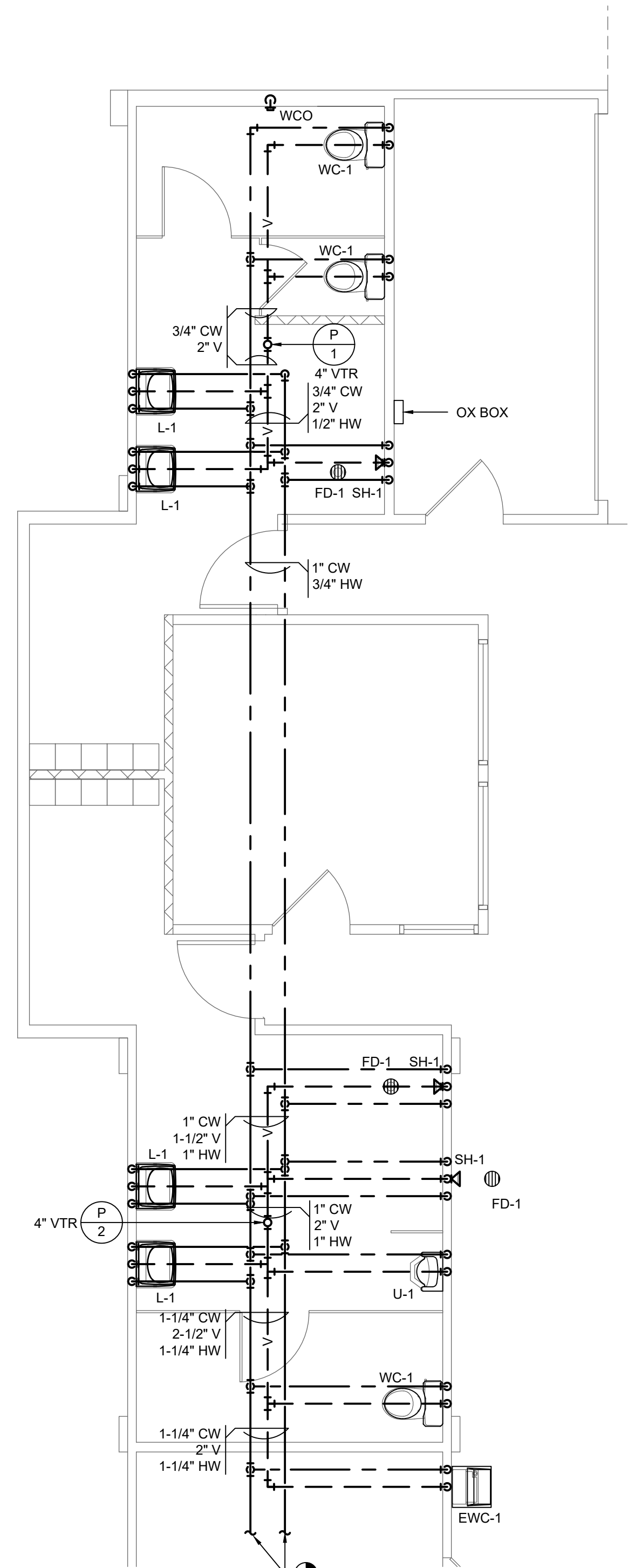
AIR TERMINAL DEVICES SCHEDULE								
PLAN MARK	QUANTITY	MANUFACTURER	MODEL	SERVICE	MOUNT TYPE	BORDER SIZE	NECK SIZE	VOLUME DAMPER
ER-1	2	TITUS	350FL	EXHAUST	SURFACE	--	8"X8"	YES
SD-1	2	TITUS	OMNI	SUPPLY	LAY-IN	12"X12"	8"	YES



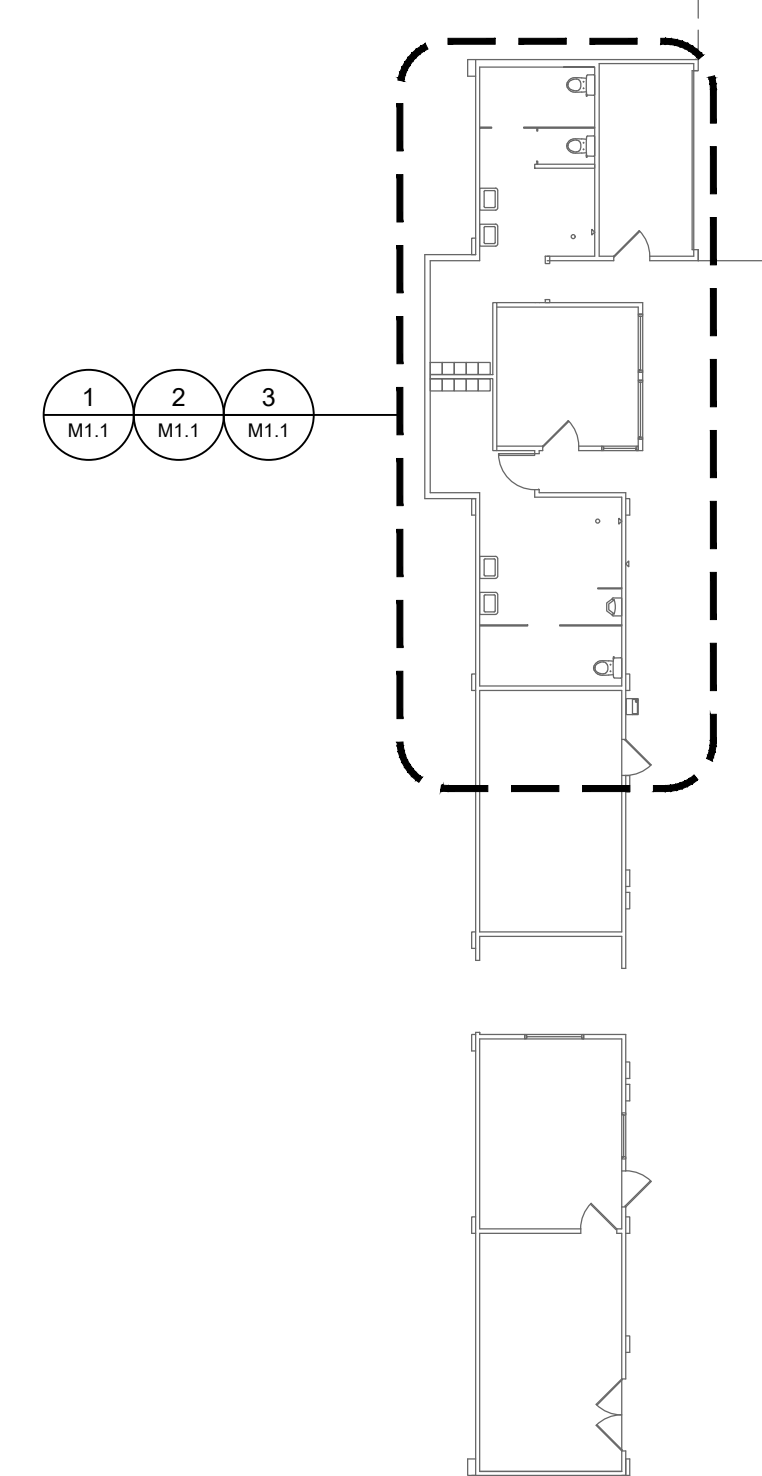
1 PARTIAL FLOOR PLAN - HVAC
1/4"=1'-0"



2 PARTIAL UNDERSLAB PLAN - PLUMBING
1/4"=1'-0"



3 PARTIAL FLOOR PLAN - PLUMBING
1/4"=1'-0"



KEY PLAN
1/16"=1'-0"

REPAIRS TO
THE NICE BUILDING
6400 EVERGREEN BLVD. BERKELEY, MO 63134

COMM	2018063
ISSUE	2018.08.15
DATE	SET

SHEET TITLE
MECHANICAL PLANS

M1.1

DESIGN ALLIANCE
affects

Corporation License No. 2009035739
6014 DELMAR BOULEVARD, SAINT LOUIS, MISSOURI, 63112
PHONE 314.863.1313 FAX 314.863.1363 email: info@allia.com

PROFESSIONAL ENGINEER
NUMBER PE-2006029713
8-15-18

NOTIFY ARCHITECT IN EVENT OF DISCREPANCIES, OMISSIONS, AND/OR CONFLICTS IN THE DRAWINGS OR SPECIFICATIONS. THE CONTRACTOR IS NOT AUTHORIZED TO SCALE THE DRAWINGS. ALL QUESTIONS IN REFERENCE TO THE CONTRACT DOCUMENTS SHALL BE IMMEDIATELY DIRECTED TO THE ARCHITECT.

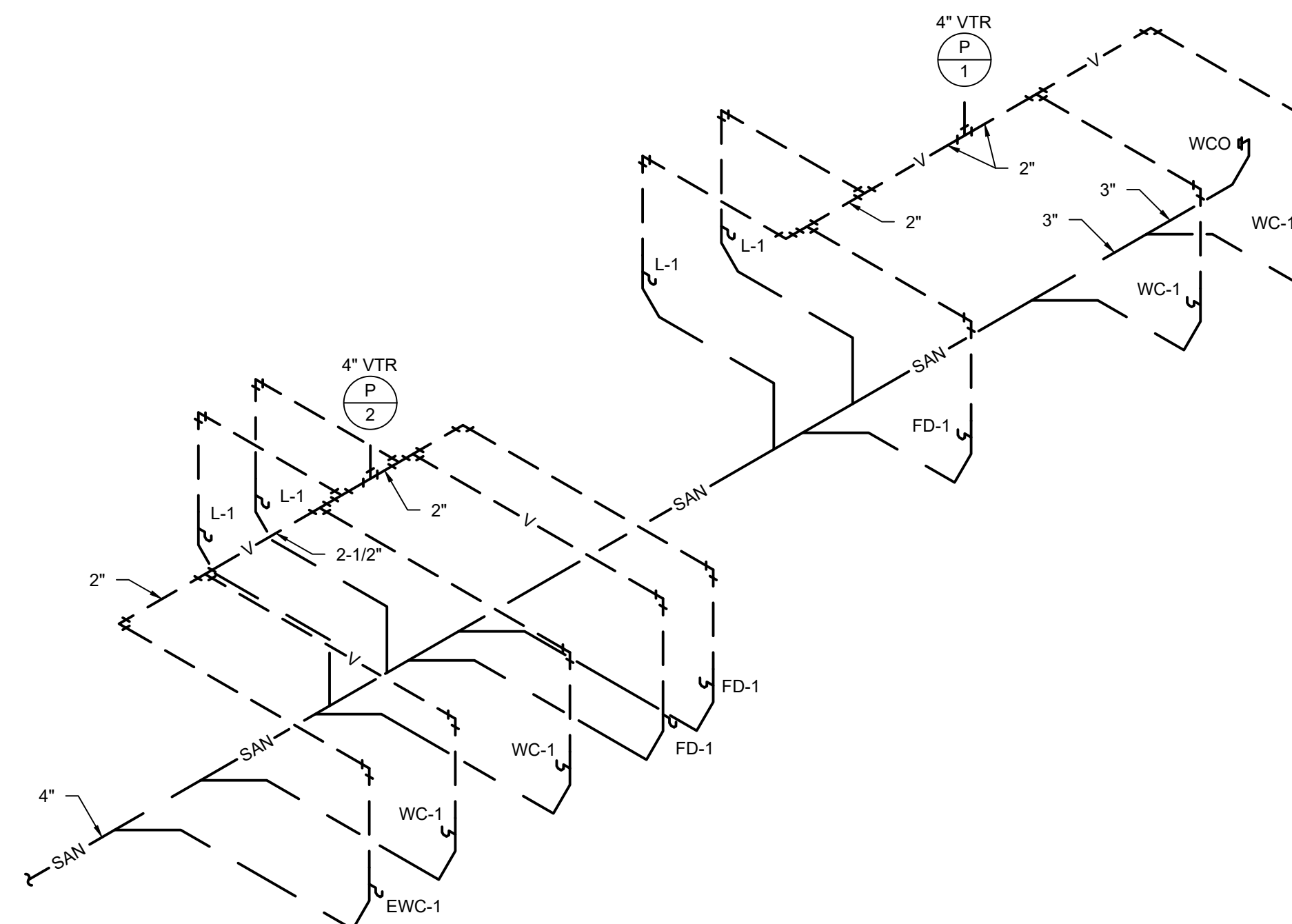
PLUMBING FIXTURE SCHEDULE						
PLAN MARK	MANUFACTURER AND MODEL	FIXTURE DESCRIPTION	ACCESSORIES MANUFACTURER AND MODEL	ACCESSORIES DESCRIPTION	SIZE	NOTES
EWC-1	HALSEY TAYLOR HVR8-ADA	ONE LEVEL, ADA COMPLIANT, BARRIER FREE, STAINLESS STEEL WATER COOLER	-	-	-	-
FD-1	JAY R SMITH 2010	CAST IRON SHALLOW SUMP FLOOR DRAIN WITH 5" ROUND TOP WITH NICKEL BRONZE STRAINER.	-	-	-	-
L-1	AMERICAN STANDARD LUCERNE 0356.041	VITREOUS CHINA, ADA COMPLIANT, D-SHAPED BOWL WALL HUNG LAVATORY.	AMERICAN STANDARD COLONY 2175.205	SINGLE CONTROL CENTERSSET FAUCET WITH METAL LEVER HANDLE.	-	PROVIDE CHROME PLATED BRASS TAILPIECE AND GRID DRAIN, CHROME PLATED BRASS P-TRAP, ANGLED STOP VALVES AND FLEXIBLE RISERS. INSULATE EXPOSED TAILPIECE, P-TRAP, AND WATER RISERS WITH ADA COMPLIANT INSULATION. SUPPLY WITH POINT OF USE MIXING VALVE THAT COMPLIES WITH ASSE1070. SET OUTLET TEMPERATURE TO 105° F.
SH-1	--	SHOWER BASE AND SURROUND PER THE ARCHITECTURAL DRAWINGS.	1.) AMERICAN STANDARD T064.508	1.) SHOWER/BATH TRIM KIT WITH PRESSURE BALANCED SINGLE HANDLE BATH MIXING VALVE, SOLID BRASS BODY, LEVEL HANDLE, CHROME FINISHED DOWNSPOUT AND SHOWER HEAD, 2.0 GPM MAX SHOWERHEAD.	--	
U-1	AMERICAN STANDARD WASHBROOK 6501.511	WALL HUNG, VITREOUS CHINA URINAL WITH WASH OUT FLUSHING ACTION AND TOP SPUD. MOUNT AT ADA HEIGHT. CHROME PLATED, EXPOSED WATER CLOSET 1.0 GPF FLUSH VALVE WITH 3/4" TOP SPUD.	1.) JAY R SMITH	1.) PROVIDE CARRIER AS REQUIRED TO SUIT APPLICATION.	-	
WC-1	AMERICAN STANDARD CADET 3 FLOWISE 2632.128	ADA COMPLIANT, FLOOR MOUNTED, FLUSH TANK, VITREOUS CHINA WATER CLOSET.	CHURCH 9500 C	SEAT: SOLID PLASTIC, OPEN FRONT, WHITE ELONGATED BOWL, INTEGRAL BUMPERS, EXTERNAL CHECK HINGES WITH STAINLESS STEEL POSTS.	-	

AIR COOLED CONDENSING UNIT SCHEDULE														
UNIT CALLOUT	SYSTEM	UNIT INFORMATION						COND. FAN DATA		CONDENSING INFORMATION				NOTES
		MFG	MODEL NO.	VOLT/ PHASE	MCA	MOCP (AMPS)	REFRIG.	TYPE	NUM	# OF COMP	TONS	THC (MBH)	AMB TEMP (°F)	
ACCU-1	FCU'S	DAIKIN	4MXS36RMVJU	208/230/1	23.9	25	R-410a	PROP	1	1	3	36.0	100	1

NOTES:
1. SUPPLY WITH LOW AMBIENT KIT FOR OPERATION DOWN TO 0 DEGREES F.

FAN COIL UNIT SCHEDULE												
UNIT CALLOUT	UNIT INFORMATION			HEATING INFO			DX COIL INFORMATION					NOTES
	MFG	MODEL NO.	FLOW (CFM)	EAT (°F)	LAT (°F)	CAP (MBH)	EAT (°F)	LAT (°F)	SHC (MBH)	THC (MBH)		
FCU-1	DAIKIN	FTXS-09-LVJU	279	68	98	9.0	82	54	8.4	9	---	
FCU-2	DAIKIN	FFQ-09-Q2VJU	339	68	92.5	9.0	80	57	8.4	9	---	
FCU-3	DAIKIN	FTXS-09-LVJU	279	68	98	9.0	82	54	8.4	9	---	
FCU-4	DAIKIN	FTXS-09-LVJU	279	68	98	9.0	82	54	8.4	9	---	

ENERGY RECOVERY UNIT SCHEDULE																		
UNIT CALLOUT	MFG	MODEL NO.	VOLT/PH	FLA	MOCP (AMPS)	ENERGY RECOVERY INFORMATION										FILTER TYPE		
						AIRFLOW INFORMATION					SUMMER AIR TEMP (°F)			WINTER AIR TEMP (°F)				
						MOTOR HP	SUPPLY CFM	OUTDOOR CFM	RETURN CFM	EXHAUST CFM	SUPPLY DB/WB	OUTDOOR DB/WB	RETURN DB/WB	SUPPLY DB/WB	OUTDOOR DB/WB		RETURN DB/WB	
ERU-1	RENEWAIRE	EV300	120/1	3.3	15	0.2	300	300	300	300	300	81.2/69.8	100/78	72/60	48.2/41.6	0/-1	72/60	1" THROWAWAY



GENERAL		PLUMBING	
①	MECHANICAL NOTE REFERENCE	— SAN —	SOIL OR WASTE ABOVE GRADE OR FLOOR
②	DEMOLITION NOTE REFERENCE	- - - SAN - - -	SOIL OR WASTE BELOW GRADE OR FLOOR
△	REVISION NOTE REFERENCE	- - - V - - -	PLUMBING VENT
⊕	CONNECT TO EXISTING WORK	- - - D - - -	DOMESTIC COLD WATER
		- - - G - - -	DOMESTIC HOT WATER
		- - - G - - -	GAS (NATURAL)
		⊕ FCO	FLOOR CLEAN OUT
		→ WCO	WALL CLEAN OUT
		⊕ HB	HOSE BIBB
		⊕	FLOOR SINK, FLOOR DRAIN, AREA DRAIN
		⊕ #	PLUMBING VENT RISER CALLOUT
		⊕	ELBOW DOWN
		⊕	ELBOW UP
		⊕	TEE UP
		⊕	TEE DOWN

Az= Floor area
Pz= Zone Population
Rp= People Outdoor Air Rate
Ra= Area Outdoor Air Rate

FCU -1 (4 Ton) Ventilation Calculation

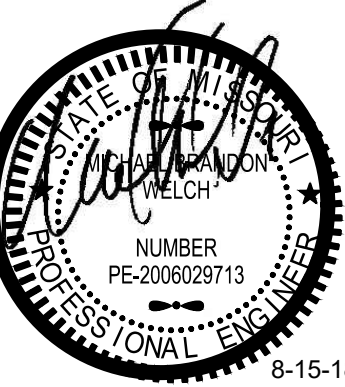
Room Name	Occupancy Classification	Occupant Density	Az	Pz	Rp	Ra	Voz
Staff 104	Conference	50	135	7	5	0.06	42
		Vot					42 cfm

1 VENTILATION CALCULATIONS
NO SCALE

2 PLUMBING RISER DIAGRAM
NO SCALE

3 MECHANICAL SYMBOLS

DESIGN ALLIANCE
a r c h i t e c t s



Corporation License No. 2009035739
6014 DELMAR BOULEVARD, SAINT LOUIS, MISSOURI, 63112
PHONE 314.863.1313 FAX 314.863.1363 email: sidd@allia.com

REPAIRS TO
THE NICE BUILDING
6400 EVERGREEN BLVD. BERKELEY, MO 63134

COMM 2018063
ISSUE 2018.08.15
DATE SET

SHEET TITLE
MECHANICAL
SCHEDULES & DETAILS

M2.1

NOTIFY ARCHITECT IN EVENT OF DISCREPANCIES, OMISSIONS, AND/OR CONFLICTS IN THE DRAWINGS OR SPECIFICATIONS. THE CONTRACTOR IS NOT AUTHORIZED TO SCALE THE DRAWINGS. ALL QUESTIONS IN REFERENCE TO THE CONTRACT DOCUMENTS SHALL BE IMMEDIATELY DIRECTED TO THE ARCHITECT.

