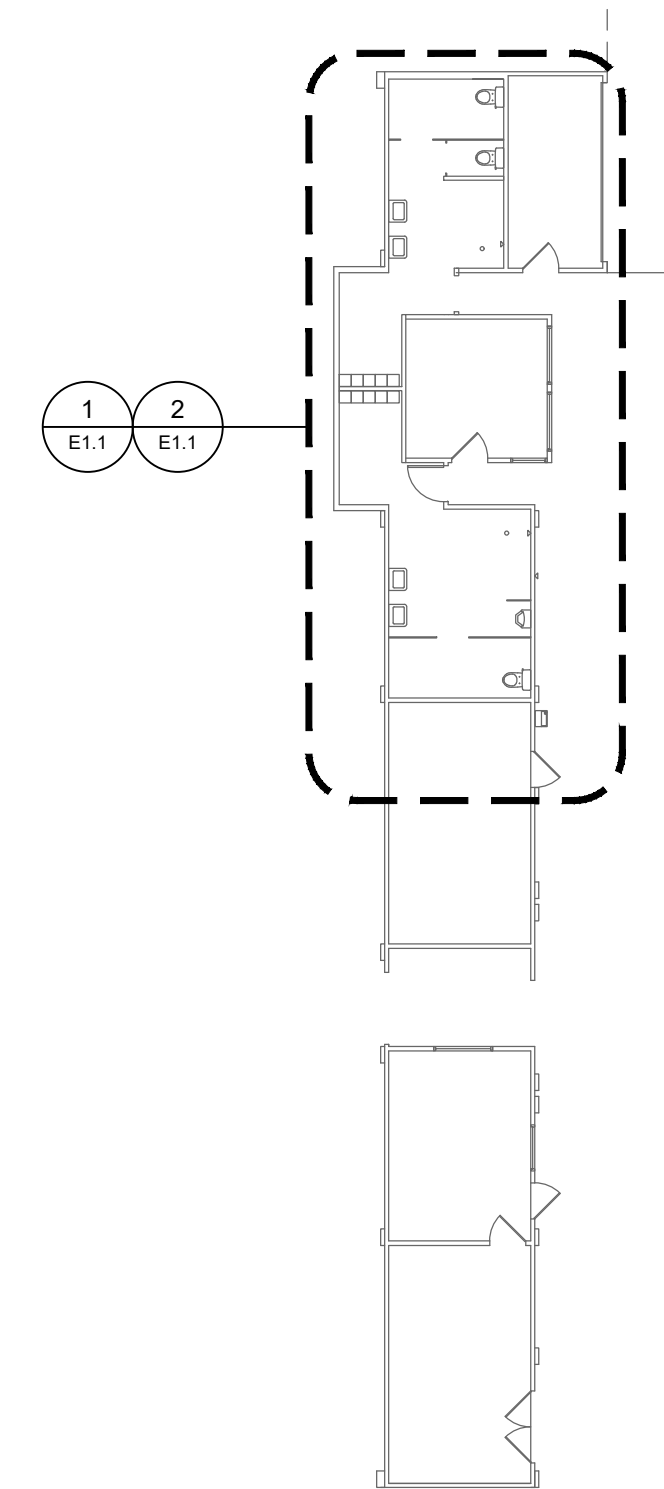


OCCUPANCY SENSOR SCHEDULE							
TAG	QTY (CONFIRM WITH PLANS)	MANUFACTURER	MODEL	MOUNTING	TYPE	TIME DELAY SETTING	NOTES
OS-1	2	LEVITON	MDS10-ID	WALL	PASSIVE INFRARED	15 MIN	
OS-2	2	LEVITON	OSC10-RMW	CEILING	DUAL TECHNOLOGY	15 MIN	FURNISH WITH POWER PACK(S) AND ISOLATED RELAY

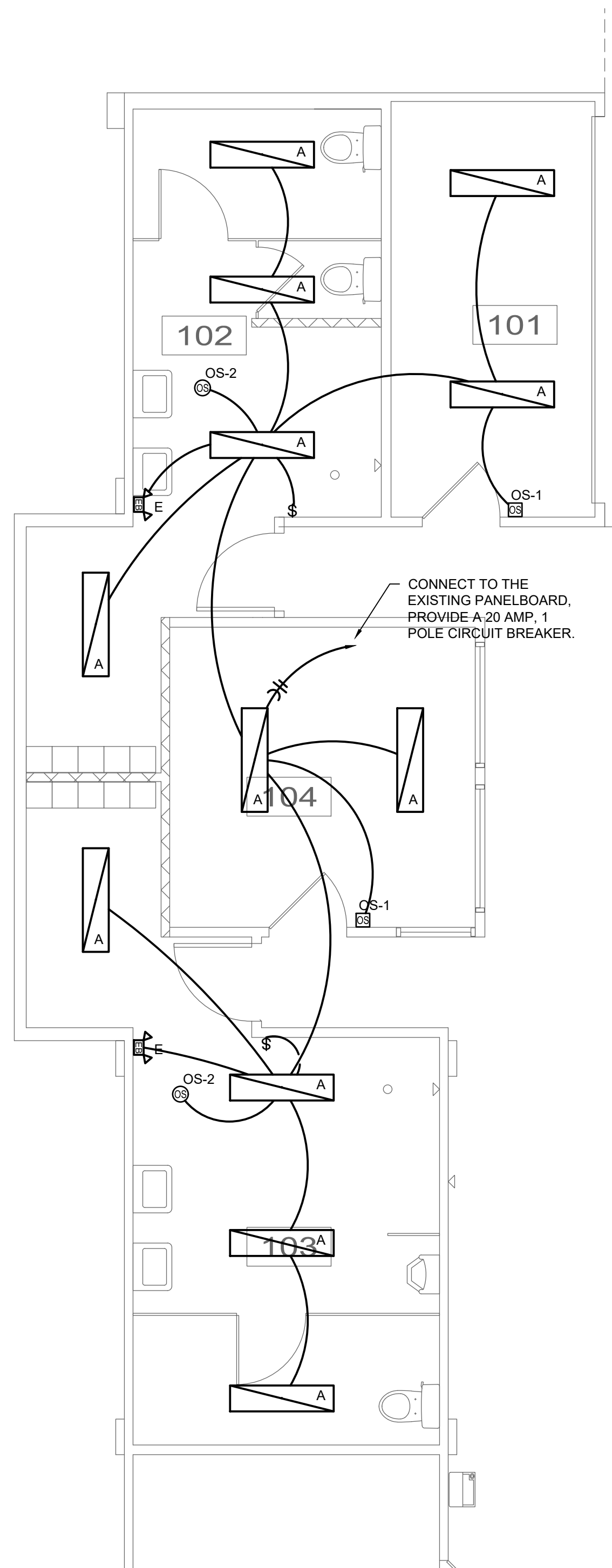
LIGHT FIXTURE SCHEDULE										
TAG	QUANTITY (CONFIRM WITH PLANS)	DESCRIPTION	VOLTAGE	MOUNTING	LAMPING			MANU/SERIES	VA	NOTES
					QTY	WATTAGE	TYPE/COLOR TEMP			
A	12	1'-0"X4'-0" SURFACE MOUNTED LED PANEL, ALUMINUM FRAME WITH ACRYLIC LENS, DAMP LOCATION LISTED.	120	SURFACE	--	39	LED/4000K/4400LM	LITHONIA#EPANL 1X4	39	

PLAN NOTES:

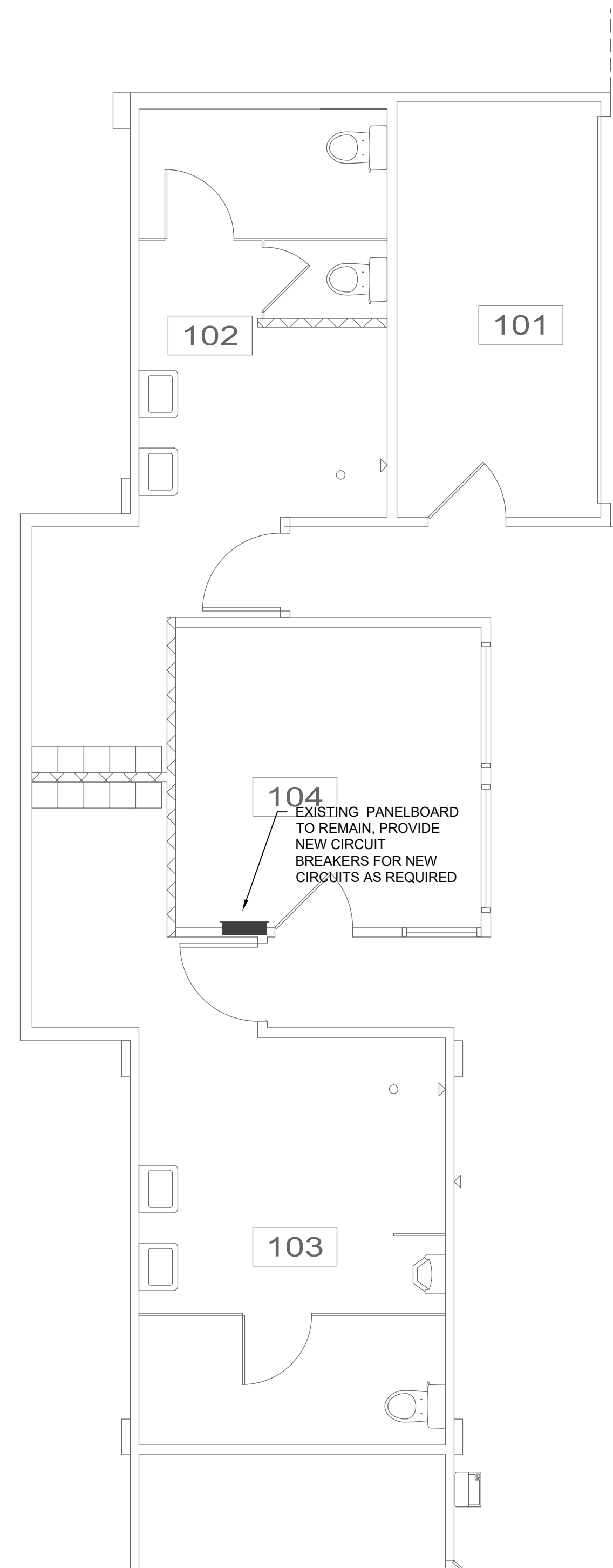
- CONNECT TO THE EXISTING PANELBOARD, PROVIDE A 20 AMP, 1 POLE CIRCUIT BREAKER.



KEY PLAN
1/16"=1'-0"



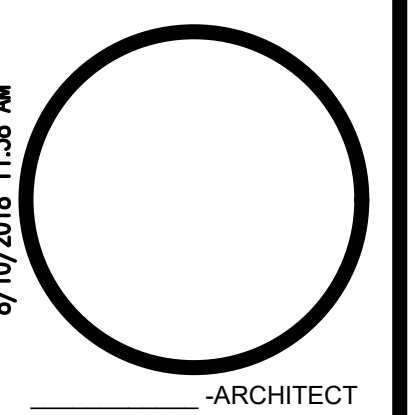
1 PARTIAL FLOOR PLAN - LIGHTING
1/4"=1'-0"



2 PARTIAL FLOOR PLAN - POWER
1/4"=1'-0"

GENERAL		COMMUNICATIONS	
1	ELECTRICAL NOTE REFERENCE	◀	TELEPHONE OUTLET
▲	REVISION NOTE REFERENCE	◀	DATA OUTLET
⊗	CONNECT TO EXISTING WORK	◀	TELEPHONE/DATA OUTLET
⊗/XX	DETAIL REFERENCE - NO./SHEET NO.	▽▽▽	ABOVE COUNTER DEVICE, MOUNT 5" ABOVE BACKSPASH OR COUNTER TOP, WHICHEVER IS HIGHER.
		TV	TELEVISION OUTLET
		▬	PLYWOOD BOARD FOR EQUIPMENT MOUNTING
CONDUIT AND WIRE		POWER DEVICE AND CONTROLS	
IG	CONDUIT HOMERUN TO PANEL NOTED WITH (2)#12 AND (1)#12 AWG GROUND UNLESS NOTED OTHERWISE. SHORT TICK MARKS INDICATE CONDUCTORS, LONG MARKS INDICATE NEUTRAL CONDUCTORS.	30A/NF	DISCONNECT SWITCH. 30A/NF INDICATES AMPERAGE, NUMBER OF POLES, AND FUSING. NF = NON FUSED. MATCH CIRCUIT VOLTAGE. 240 VOLT, 3 POLE, 30 AMP NON FUSED IF BLANK.
—	GROUND WIRE. #12 AWG UNLESS NOTED OTHERWISE.	⊗	MOTOR
—	CONDUIT CONCEALED IN WALL OR ABOVE CEILING WITH (2)#12 AND (1)#12 AWG GROUND UNLESS NOTED OTHERWISE.	▬	PANELBOARD
—	CONDUIT BELOW GRADE OR FLOOR WITH WITH (2)#12 AND (1)#12 AWG GROUND UNLESS NOTED OTHERWISE.	⊗	CONTACTOR
WIRING DEVICES		⊗	PHOTOCELL
NOTE: REFER TO SPECIFICATIONS FOR MOUNTING HEIGHTS NOT LISTED.		⊗	JUNCTION BOX
⊗	SIMPLEX, DUPLEX, AND QUAD RECEPTACLE. MOUNT AT 18" AFF TO CENTER OF DEVICE UNLESS NOTED OTHERWISE.	⊗	PUSHBUTTON
⊗	ABOVE COUNTER RECEPTACLE, MOUNT 5" ABOVE BACKSPASH OR COUNTER TOP, WHICHEVER IS HIGHER.	⊗	TRANSFORMER
⊗	RECEPTACLE DESIGNATIONS: GFI - GROUND FAULT CIRCUIT INTERRUPTER RECEPTACLE WP - WEATHER RESISTANT RECEPTACLE WITH "IN-USE" COVER U - DUPLEX RECEPTACLE WITH (2) USB CHARGING PORTS, LEVITON T5832 OR EQUAL	⊗	TIMECLOCK
\$	WALL SWITCH, SINGLE POLE. MOUNT AT 46" AFF TO CENTER OF DEVICE UNLESS NOTED OTHERWISE		
⊗ MS-1	MOTION SENSOR, CEILING MOUNTED. DESIGNATION INDICATES TYPE - REFER TO OCCUPANCY SENSOR SCHEDULE	LIGHTING	
⊗ MS-1	MOTION SENSOR, WALL MOUNTED. DESIGNATION INDICATES TYPE - REFER TO OCCUPANCY SENSOR SCHEDULE. MOUNT AT 46" AFF TO CENTER OF DEVICE	⊗	WALL/CEILING MOUNTED EMERGENCY LIGHTING UNIT
		⊗	LIGHT FIXTURE

3 ELECTRICAL SYMBOLS
NO SCALE



8/10/2018 11:58 AM

REPAIRS TO
THE NICE BUILDING
6400 EVERGREEN BLVD. BERKELEY, MO 63134

COMM	2018063
ISSUE	2018.08.01
DATE SET	

SHEET TITLE
ELECTRICAL PLANS

E1.1

8/10/2018 11:58 AM

NOTIFY ARCHITECT IN EVENT OF DISCREPANCIES, OMISSIONS, AND/OR CONFLICTS IN THE DRAWINGS OR SPECIFICATIONS. THE CONTRACTOR IS NOT AUTHORIZED TO SCALE THE DRAWINGS. ALL QUESTIONS IN REFERENCE TO THE CONTRACT DOCUMENTS SHALL BE IMMEDIATELY DIRECTED TO THE ARCHITECT.